



St. Andrew's CofE Primary School

Covid-19 Visitor Guidelines

At St. Andrew's CofE Primary School we ask for the support and understanding of our visitors in helping us to minimise the risk of Covid-19. Our main focus is for the safety and welfare of our pupils, their families and our staff. We continue to take guidance from the Department for Education and Public Health England. Taking this into account, we are now limiting access to the site to essential visitors by appointment only. If you are unsure as to whether your proposed visit to the school is essential, please email office@st-andrews.northants.sch.uk

If your visit to our school is an essential one, we would nevertheless ask that you refrain from visiting if you:

- Have travelled from a country in the last 14 days on the Government's list for quarantining (<https://www.gov.uk/guidance/coronavirus-covid-19-travel-corridors>)
- Have symptoms of Covid-19.
 - *High temperature*
 - *New consistent cough*
 - *Loss of/change of taste/smell*
- Anyone in your household is required to self-isolate in accordance with Government guidelines.

Visitors should not enter school if they or a member of their household has symptoms of coronavirus.

The family should all self-isolate at home and arrange for a coronavirus test.



Do not leave home if you or someone you live with has any of the following:

- a high temperature
- a new, continuous cough
- a loss of, or change to, your sense of smell or taste

[Check the NHS website if you have symptoms](#)

Along with all members of the St. Andrew's CofE community, any visitors to the school should wash their hands with soap and water before leaving home and once they arrive at St. Andrew's CofE use the hand sanitiser provided.

Once signed in by a member of staff, we would ask and expect that you repeat good hand hygiene during your visit:

- Wash your hands often with soap and water throughout the day, especially prior to eating, for the recommended 20 seconds. Hand sanitiser will also be located around the building for you to use.
- In the event of coughing/sneezing – please use tissues, disposing of them immediately and then washing your hands.
- Avoid touching your eyes, nose and mouth with unwashed hands.

When you are met by one of our members of staff, they will not offer a handshake as a greeting – please do not be offended by this.

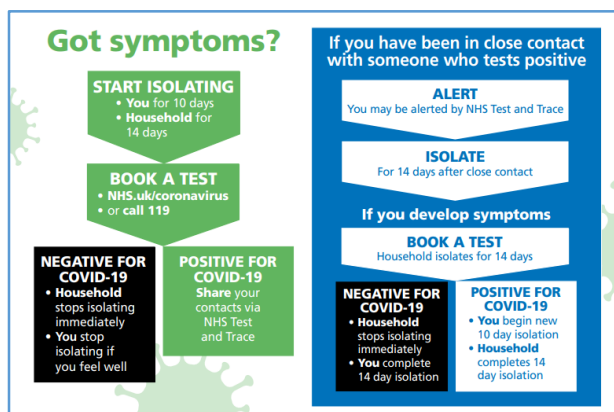
Our Risk Assessment for Covid-19 does not encourage the use of masks or coverings.

Where possible, visitors are to remain 2m apart from all other staff and pupils, when moving around the site and, if taking a seat during your visit, you should be positioned 2m apart from those in the same room.

During your visit, unfortunately we are unable to offer our usual hospitality however you are welcome to bring a bottle of water, snack with you.

If you wish to use the toilet facilities while on site, a member of staff will direct to where you need to go. Please make an effort to sanitise before and after use.

If you start to present Covid-19 symptoms or feel unwell on site, please advise the member of staff you are visiting and go home immediately. A member of staff will sign you out at reception. You should seek a test and we ask that you contact the school to let us know, if you have a positive or negative result.



HELP & ADVICE

Online

<http://nhs.uk/coronavirus>

or call 119

'Our love should not be just words and talk; it must be true love, which shows itself in action.' 1 Corinthians 16:14

Live Our Values Everyday